

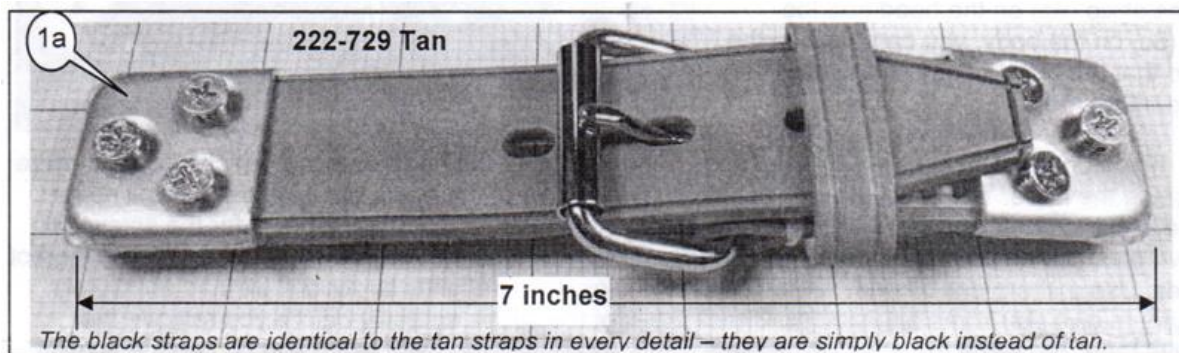
## LEATHER BONNET STRAPS

### Rover Mini

Part Number: **222602**



One of the classic features of British racing sports cars from the 1950's and '60's are the leather straps that were used to secure the bonnet (hood). These generally did not replace the conventional hood latch mechanism – they were intended to keep the hood from flying open if the stock latch mechanism failed. BMC generally used tan leather. As is often the case, these racing vits found there way onto many cars that were never used on the track. There were many types of straps, some being long enough to go across the entire hood. We sell a more common version, which is about 7 inches (177.8m) long overall once installed. The Minis used one but often the straps were used in pairs.



The ends of the straps are covered by a stamped stainless-steel plate (1a). the heavy-duty buckle has a roller under the tongue.

Each plate has three countersunk holes for the flat head mounting screws, which are supplied with flat washers and nyloc nuts (3a).

The plates are covered by a blue (4a, as in these photos) or white plastic film to keep them from being scratched.

#### QUALITY PARTS AND ACCESSORIES

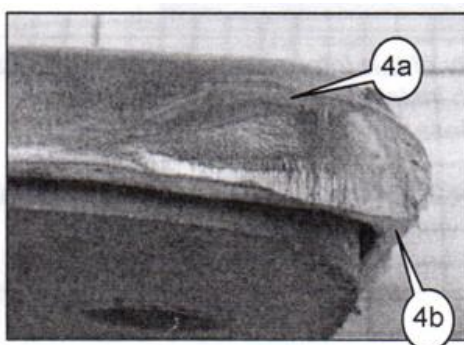
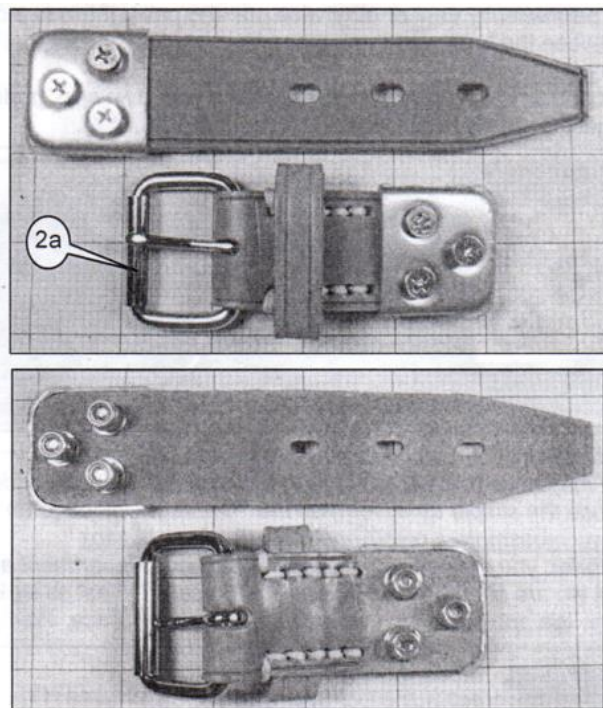


Triumph House, Sleaford Road, Bracebridge Heath, Lincoln LN4 2NA, England

UK Tel: +44 (0)1522 568000 | USA Tel: 1 855 746 2767 | Fax: +44 (0)1522 567600 | E-mail: sales@rimmerbros.com

[www.rimmerbros.com](http://www.rimmerbros.com)

this is an accessory item – there is no “right” place to install it. There is, however, some logic involved. The straps will be most effective when mounted as far away from the hinges as practical. You do need to consider the area underneath as well you need clear access to the nyloc nuts provided with the straps. The screws provided will extend 3/8” (9.5mm) below the bottom surface of the leather strap. This is more than enough to pass through a single thickness steel panel. Once you have decided where to mount the straps, cover the area where the straps will be mounted with tape. The blue 3M painter’s masking tape works well. Remove the screws and carefully position the straps on the body so that the straps are symmetrical side to side. If you place the strap (6a) on the hood and the buckle (6c) on the body, you can position the strap so that the buckle does not overlap the hood opening (6b).



## QUALITY PARTS AND ACCESSORIES

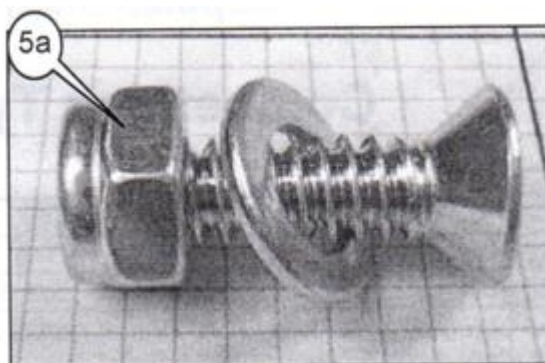


Triumph House, Sleaford Road, Bracebridge Heath, Lincoln LN4 2NA, England

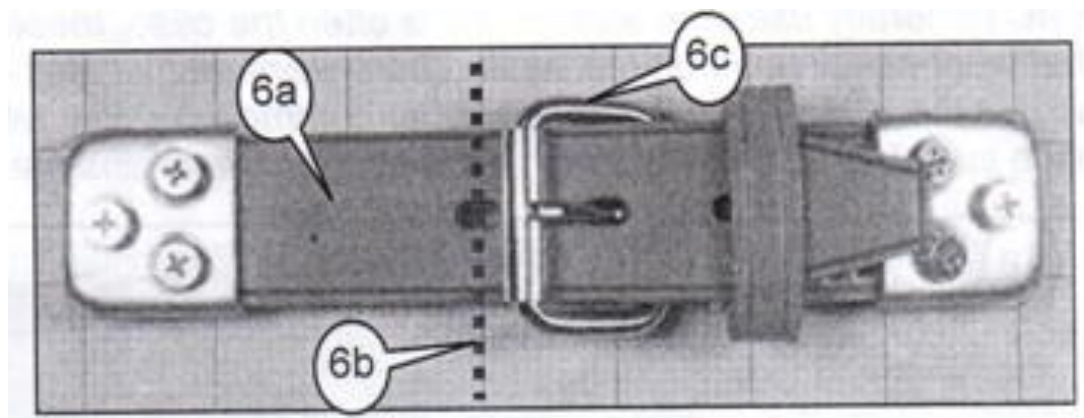
UK Tel: +44 (0)1522 568000 | USA Tel: 1 855 746 2767 | Fax: +44 (0)1522 567600 | E-mail: sales@rimmerbros.com

[www.rimmerbros.com](http://www.rimmerbros.com)

if you do this, the buckle will never flop over the edge of the hood opening, which would interfere with closing the hood. The strap (6a) will extend past the edge of the hood, but it is so stiff it will never interfere with the hood closure, with the straps where you want them, mark the holes for the screws. If you have one, use an automatic centre punch to dimple the Sheetmetal where you marked the location of the holes.



Use a sharp drill bit and carefully drill the holes, use a slightly larger drill bit than necessary to give you some adjustment. Check the fit of the straps carefully before you remove the protective tape. Note that the edge of the plate (4b) may contact the paint when you tighten the screws. This will permanently dent or otherwise mar the paint. If this is a concern, cut a piece of thin plastic sheet to go between the body and the leather, you want just enough additional thickness to keep the edge of the plate off the paint. Leather is a natural material, and like your own skin, prolonged exposure to the sun will dry it out. We suggest keeping the leather covered with GAC2057X.



## QUALITY PARTS AND ACCESSORIES



Triumph House, Sleaford Road, Bracebridge Heath, Lincoln LN4 2NA, England

UK Tel: +44 (0)1522 568000 | USA Tel: 1 855 746 2767 | Fax: +44 (0)1522 567600 | E-mail: sales@rimmerbros.com

[www.rimmerbros.com](http://www.rimmerbros.com)