

RADIATOR COOLING FAN

Triumph TR6 1972-1976 Model

Part Number: **312301**

The red 14.5" diameter fan was introduced on US spec cars with the 1972 model year. AICF (w/carbs) and CR (petrol injection) cars were equipped with this fan from 1973 on.

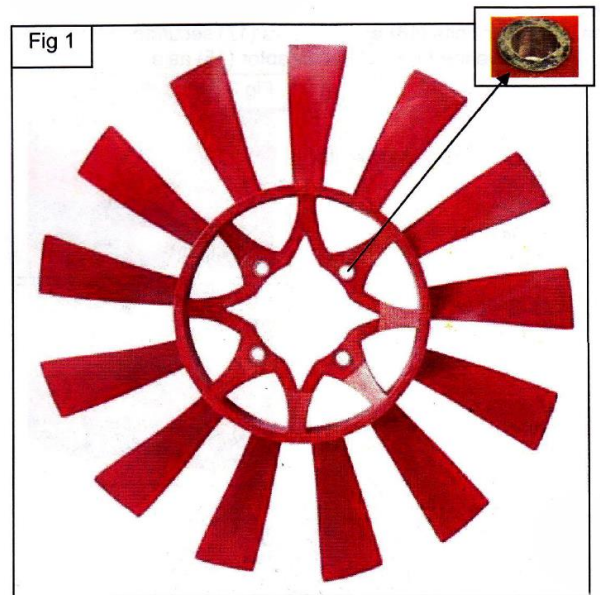
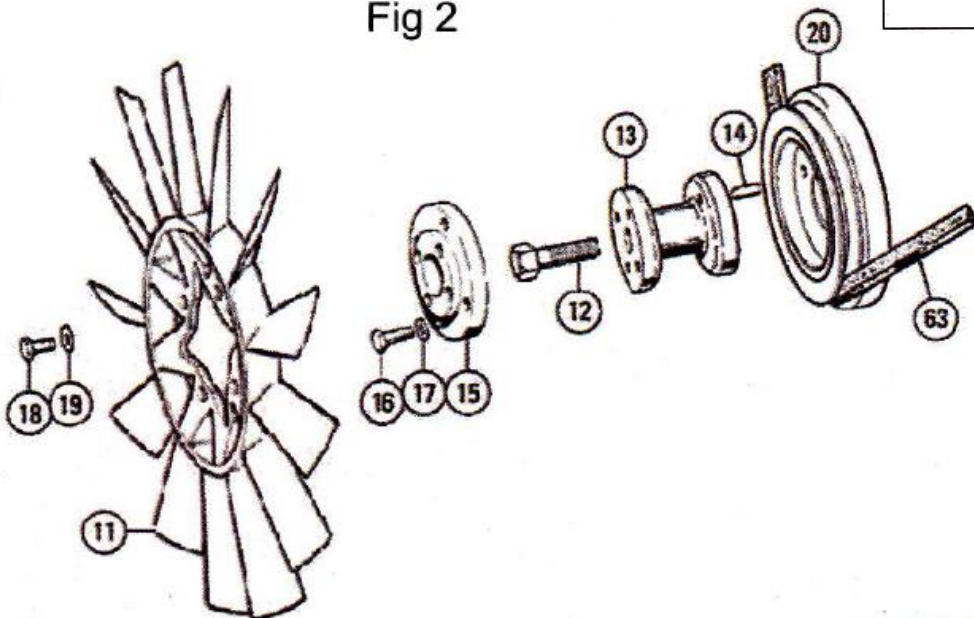


Fig 2



The illustration in the factory parts book RTC9093A is wrong and therefore confusing. The arrangement of the components in Fig 2.

QUALITY PARTS AND ACCESSORIES



Triumph House, Sleaford Road, Bracebridge Heath, Lincoln LN4 2NA, England

UK Tel: +44 (0)1522 568000 | USA Tel: 1 855 746 2767 | Fax: +44 (0)1522 567600 | E-mail: sales@rimmerbros.com

www.rimmerbros.com

Fitting Kit for Cooling fan not included – 312301FK

CONTENTS

Part No.	Description	Qty
BH605101	BOLT – 5/16 INCH UNF X 1 ¼ INCH	4
BH605131	BOLT	4
GHF301	WASHER PLAIN – 5/16 INCH M8	8

Separate fitting information

Part No.	Description	Qty
148832	BOLT - EXTENSION TO CRANK	1
140419	DOWEL	4
BH605131	BOLT – FAN ADAPTOR TO HUB EXTENSION	4
GHF301	WASHER, FLAT, FAN ADAPTOR TO HUB EXTENSION	4
BH605101	BOLT – 5/16 INCH UNF X 1 ¼ INCH	4

If you can get your hands on an original 157876 fan adaptor [see (15) in Fig 2) this fan can be bolted on to any TR250, TR5 or TR6.

1. **REMOVING THE EXISTING FAN** (numbers relating to Fig 2) Based on the factory workshop manual, 26.25.06
2. Remove the radiator (see your workshop manual for procedure)
TO REMOVE THE FAN ONLY
3. Look at the fan; you can see two groups of 4 bolts each; the outer 4 secure the fan.
4. Using ½” wrench or socket, remove the outer four bolts (18) and washers (19) securing the fan to the fan adaptor (15) and remove the fan.

QUALITY PARTS AND ACCESSORIES



Triumph House, Sleaford Road, Bracebridge Heath, Lincoln LN4 2NA, England

UK Tel: +44 (0)1522 568000 | USA Tel: 1 855 746 2767 | Fax: +44 (0)1522 567600 | E-mail: sales@rimmerbros.com

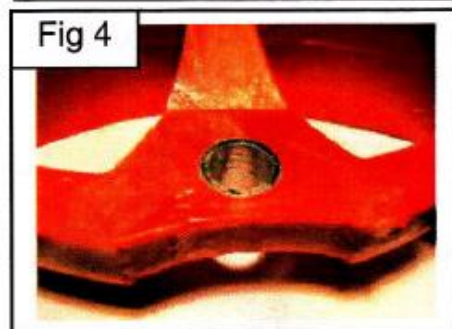
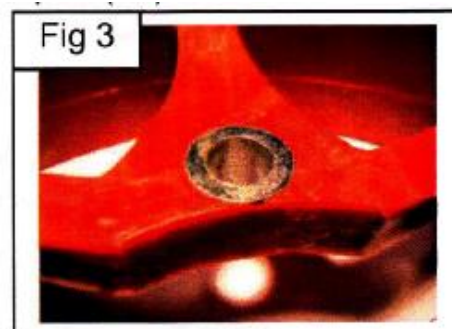
www.rimmerbros.com

TO REMOVE FAN AND ADAPTOR TOGETHER

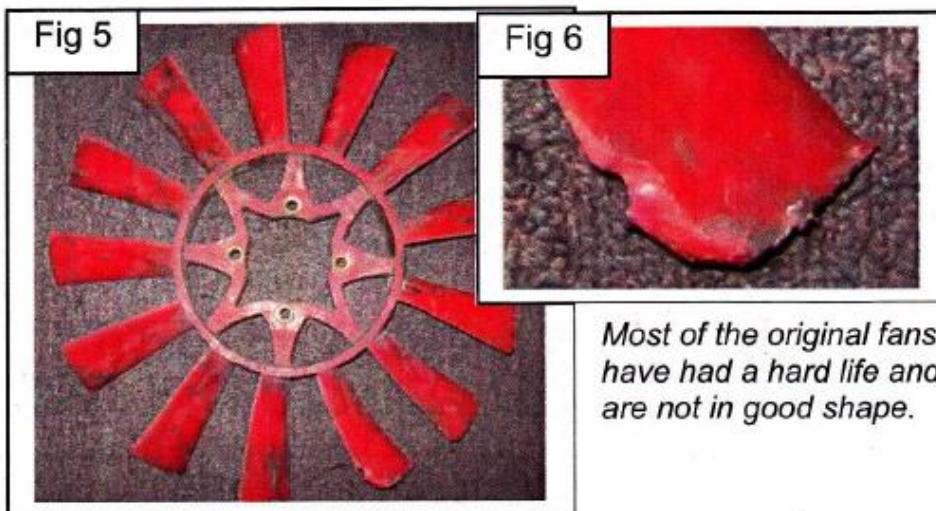
- Using 1/2" wrench or socket, remove the inner four bolts (16) and washers (17) securing the fan adaptor (15) to the crank extension (13) and remove the fan (11) and adaptor (15) as a unit.

FITTING THE NEW FAN

- If only the existing fan was removed:
Look at the metal inserts for the bolts. The wide lip on the insert (Fig 3) goes toward the front; the narrow lip (Fig a) goes against the adaptor (15). Offer up the fan (1 1) to the adaptor (15) Align the bolt holes in the fan with the holes in the adaptor. Start all four securing bolts and washers. Tighten the bolts evenly.
- If the existing fan was removed with the adaptor (15):
Offer up the fan and adaptor to the crankshaft extension (13) and align the bolt holes. Start all four securing bolts and washers. Tighten the bolts evenly. Reinstall the radiator and refill the cooling system.
- Re-Install the radiator and refill the cooling system.**



How this Fan Came to be...



QUALITY PARTS AND ACCESSORIES



Triumph House, Sleaford Road, Bracebridge Heath, Lincoln LN4 2NA, England

UK Tel: +44 (0)1522 568000 | USA Tel: 1 855 746 2767 | Fax: +44 (0)1522 567600 | E-mail: sales@rimmerbros.com

www.rimmerbros.com