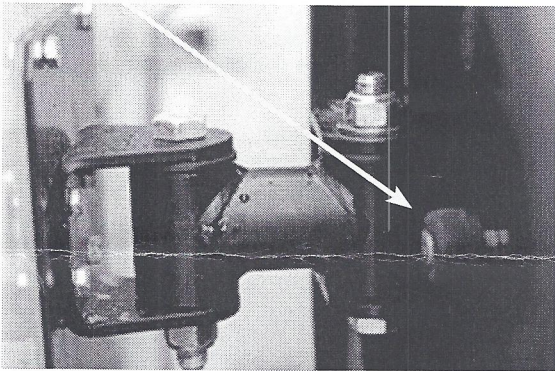
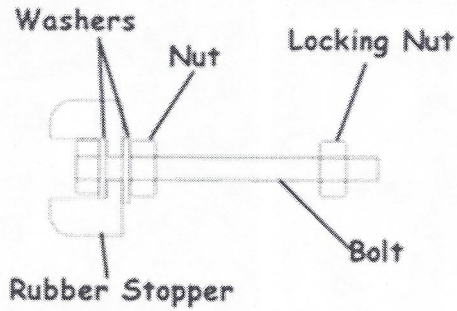
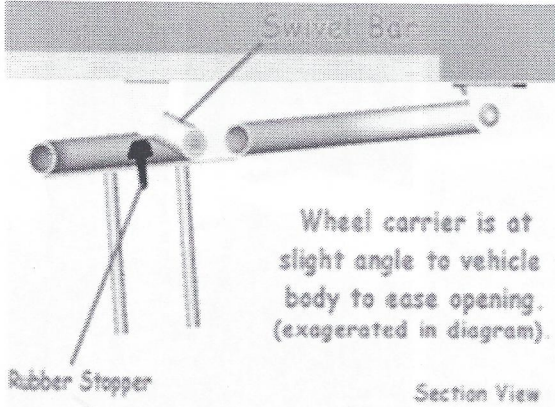


Spare Wheel Carrier Fitting Instructions BA 132

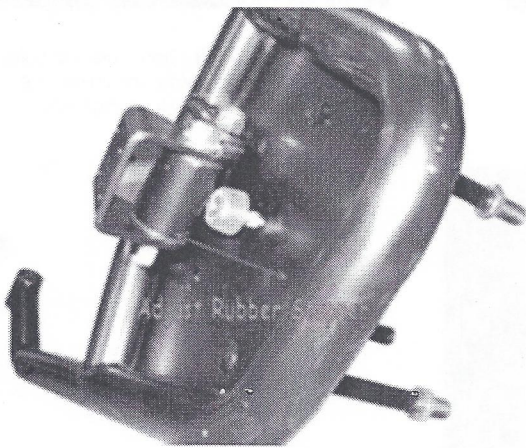


Est. UK 1958
Bearthmach
LAND ROVER PARTS



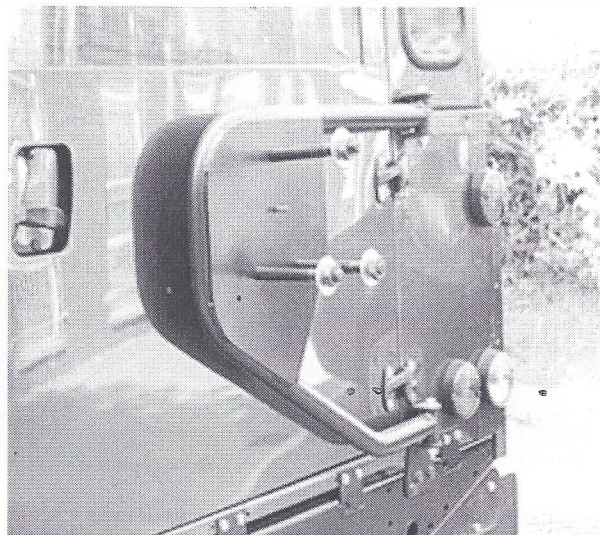
Step 9

Close the rear end door and fit the rubber stopper assembly to the back of the carrier plate. (Ensure it is all tightly assembled (see diagrams above)). This will give a slight angle between the wheel carrier and door, as it rests on the swivel bar when in the closed position. This angle is needed for the device to work properly.



Step 10

Now adjust the rubber stopper until it firmly pushes on the door bracket/swivel bar when in the closed position. It may prove easier to open and close the door a few times, adjusting the bung until there is minimal movement in the wheel carrier. Lock the rubber stopper assembly against the plate by tightening the locking nut.



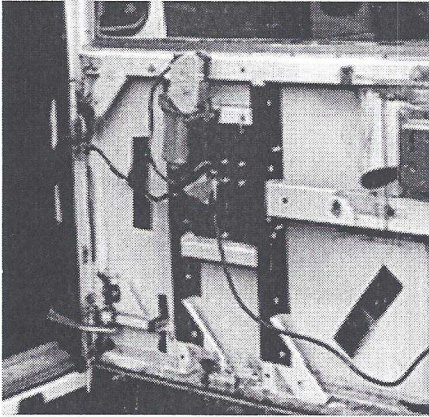
Step 11

Finally fit the 3 backing nuts and washers before fitting the wheel. Ensure all nuts and bolts are secure before driving. It is recommended that all nuts and bolts are locked with a thread lock product such as 'Loctite'. On certain vehicles it may be necessary to replace some of the supplied nuts/bolts with longer or more suitable items.

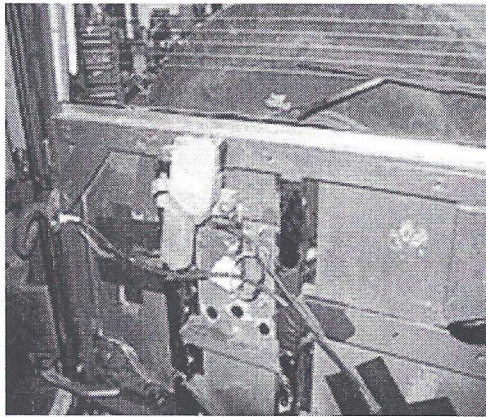
Spare Wheel Carrier Fitting Instructions BA 132



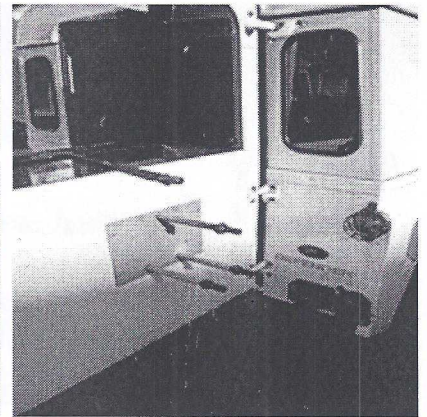
Est. UK 1958
Bearmach
LAND ROVER PARTS



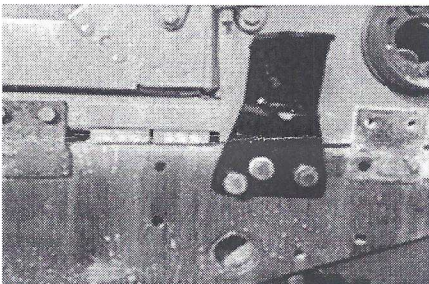
Step 1
Open tail door and remove trim



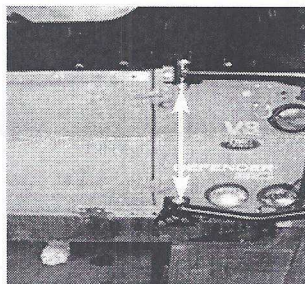
Step 2
Remove wiper arm and slacken off retaining nut. Remove bracket bolts and loom connection. Spin the motor out of the way.



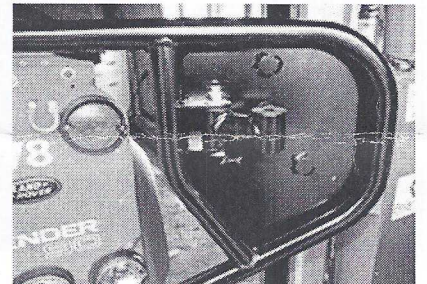
Step 3
Remove the old spare wheel carrier as you have to fit the strengthening plates on later.



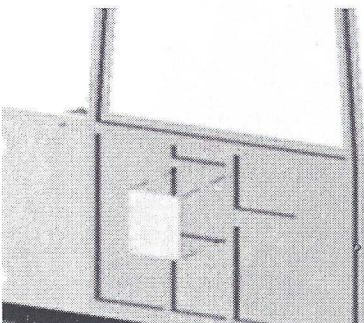
Step 4
Fit the bottom bracket to the cross member using the 3 x M10 bolts. Take care to ensure that the holes are opened to 10mm.



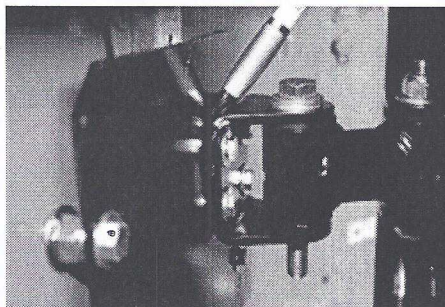
Step 5
Take care to ensure that the top bracket is vertically above the bottom bracket.



Step 6
Fit swivelling bar using 12mm nuts and bolts provided. The wheel carrier should now be supporting itself and able to swing freely.



Step 7
Fit the strengthening/re-enforcing plates (using shorter M6 bolts) either side of the door. It is easiest to position the inside plate and drill out, before fitting the outer one.



Step 8
Mark where the holes for the door bracket are to be drilled (ie through both re-enforcing plates and the door). Drill and secure with the longer M6 bolts and nuts.